



RECEIVED

23/1/2026



Workhorse Exploration
Unit 5/235 Main Street
Osborne Park, WA
Australia 6017
ACN: 690 544 248

Date: 15th January 2026

AUSTRALIAN MINING AND EXPLORATION TITLE SERVICES PTY LTD

C/- AUSTRALIAN MINING AND EXPLORATION TITLE SERVICES PTY LTD,
PO BOX 40, DUNCRAIG, WA, 6023

Subject: Notice of Application for Exploration Licence E 36/1130 – Service under Section 118 of the Mining Act 1978

Dear Sir/Madam,

I am writing to formally serve notice, in accordance with Section 118 of the *Mining Act 1978 (WA)*, regarding the application for Exploration Licence E 36/1130, lodged on 14 January 2026, which overlaps with Miscellaneous Licence L 36/214 held by JUNO MINERALS LIMITED.

Please find enclosed the following documents:

- A copy of Form 21 – Application for Exploration Licence E 36/1130
- A map showing the tenement boundary and location

This correspondence is being provided to ensure the Miscellaneous Licence Holder is informed of the proposed exploration activities within the lease area. The exploration licence application is currently pending with the Department of Mines, Industry Regulation and Safety (DMIRS).

If you have any questions or require further information regarding this application, please don't hesitate to contact me at the details above.

Thank you for your attention to this matter.

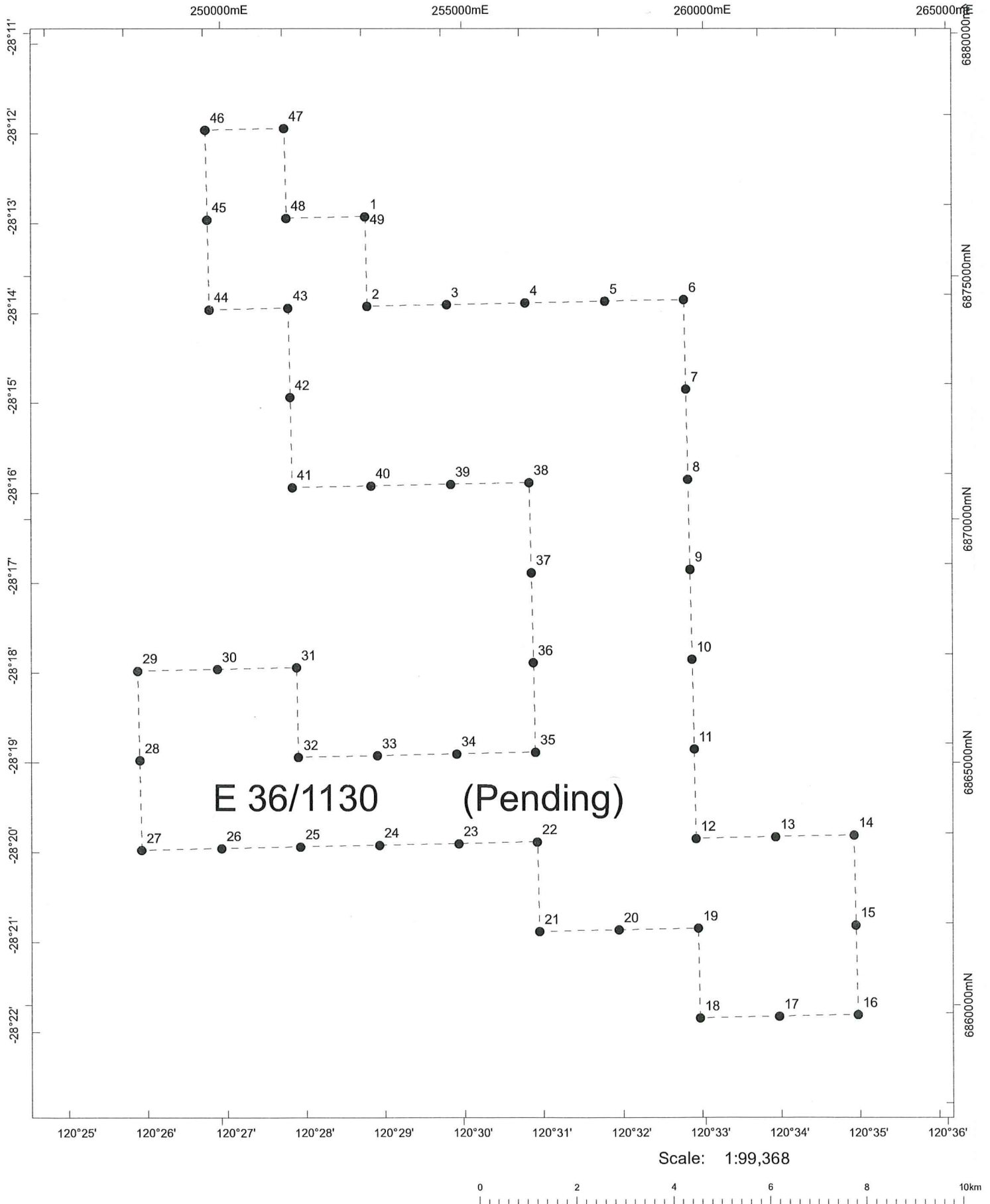
Kind regards,

Anthony Lipari

Object Description : E 36/1130 (Pending)

Estimated area : 10274.40 (Ha) - Unsurveyed

Datum : GDA2020





**Department of Mines,
Petroleum and Exploration**

This plan has been compiled from various data sources received from a number of agencies and with information supplied by applicants for mining tenements. No responsibility is accepted for any error or omission. The Commonwealth of Australia (c) 2002, through Geoscience Australia and the Department of Defence, maintains copyright over those parts of the topographic data it has provided for display in TENGGRAPH. Users wishing to use the data in its unaltered form should contact Geoscience Australia at www.ga.gov.au. Confirmation of the extent and composition of any Native Title Claims, Determinations or ILUAs should be sought from the National Native Title Tribunal (NNTT) specifically - Register of Native Title Claims (RNTC); National Native Title Register (NNTFR) or Register of Indigenous Land Use Agreements (ILUAs). Enclosed Pastoral Lease land and Pre 1994 mining confined to Nhamuwanga Wajari and Ngaliwanga ILUA Native Title determination boundary.

TENGRAPH (c) 2014

05:00 AM, 15/01/2026

ex78926

Page: 2

The numeric precision shown does not reflect the spatial accuracy of the ground position.

Object Description : E 36/1130 (Pending)

Estimated area : 10274.40 (Ha) - Unsurveyed

Datum : GDA2020

1 Main Polygon description.

Geographic coordinates		Grid coordinates			Azimuths and distances		
Id	Latitude (South)	Longitude (East)	Zone	Northing(m)	Easting(m)	Mid Azimuth	Spheroidal dist. (m)
1	28° 12' 59.9502"	120° 29' 00.0363"	50	6873879.392	841920.942		
1	28° 12' 59.9502"	120° 29' 00.0363"	51	6876231.738	253008.414		
2	28° 13' 59.9501"	120° 29' 00.0359"	50	6872031.181	841867.724	180° 00' 01.23" (0° 00' 01.23")	1847.051
2	28° 13' 59.9501"	120° 29' 00.0359"	51	6874384.434	253046.802	180° 00' 01.23" (0° 00' 01.23")	1847.051
3	28° 13' 59.9501"	120° 30' 00.0358"	51	6874418.339	254682.838	89° 59' 59.96" (269° 59' 59.96")	1635.819
4	28° 13' 59.9501"	120° 31' 00.0358"	51	6874452.018	256318.862	89° 59' 59.96" (269° 59' 59.96")	1635.818
5	28° 13' 59.9501"	120° 32' 00.0357"	51	6874485.471	257954.875	89° 59' 59.97" (269° 59' 59.97")	1635.818
6	28° 13' 59.9501"	120° 33' 00.0357"	51	6874518.698	259590.878	89° 59' 59.94" (269° 59' 59.94")	1635.821
7	28° 14' 59.9501"	120° 33' 00.0358"	51	6872671.442	259628.280	179° 59' 59.79" (359° 59' 59.79")	1847.055
8	28° 15' 59.9501"	120° 33' 00.0358"	51	6870824.183	259665.702	179° 59' 59.89" (359° 59' 59.89")	1847.061
9	28° 16' 59.9501"	120° 33' 00.0358"	51	6868976.919	259703.142	180° 00' 00.14" (0° 00' 00.14")	1847.065
10	28° 17' 59.9501"	120° 33' 00.0357"	51	6867129.652	259740.601	180° 00' 00.13" (0° 00' 00.13")	1847.070
11	28° 18' 59.9501"	120° 33' 00.0357"	51	6865282.382	259778.083	180° 00' 00.02" (0° 00' 00.02")	1847.074
12	28° 19' 59.9501"	120° 33' 00.0357"	51	6863435.108	259815.585	180° 00' 00.00" (0° 00' 00.00")	1847.078
13	28° 19' 59.9501"	120° 34' 00.0357"	51	6863468.185	261450.045	90° 00' 00.01" (270° 00' 00.01")	1634.293
14	28° 19' 59.9501"	120° 35' 00.0358"	51	6863501.036	263084.494	90° 00' 00.00" (270° 00' 00.00")	1634.293
15	28° 20' 59.9500"	120° 35' 00.0358"	51	6861653.783	263121.505	180° 00' 00.02" (0° 00' 00.02")	1847.083
16	28° 21' 59.9501"	120° 35' 00.0358"	51	6859806.526	263158.535	180° 00' 00.03" (0° 00' 00.03")	1847.088
17	28° 21' 59.9501"	120° 34' 00.0357"	51	6859773.650	261524.596	269° 59' 59.99" (89° 59' 59.99")	1633.784
18	28° 21' 59.9501"	120° 33' 00.0357"	51	6859740.547	259890.648	269° 59' 59.96" (89° 59' 59.96")	1633.782
19	28° 20' 59.9501"	120° 33' 00.0357"	51	6861587.829	259853.107	0° 00' 00.07" (180° 00' 00.07")	1847.088
20	28° 20' 59.9501"	120° 32' 00.0359"	51	6861554.513	258218.896	270° 00' 00.00" (90° 00' 00.00")	1634.032
21	28° 20' 59.9501"	120° 31' 00.0358"	51	6861520.970	256584.669	269° 59' 59.92" (89° 59' 59.92")	1634.038
22	28° 19' 59.9501"	120° 31' 00.0360"	51	6863368.274	256546.638	0° 00' 00.36" (180° 00' 00.36")	1847.084
23	28° 19' 59.9501"	120° 30' 00.0359"	51	6863334.517	254912.142	269° 59' 59.90" (89° 59' 59.90")	1634.294
24	28° 19' 59.9501"	120° 29' 00.0360"	50	6860941.849	841547.877	269° 59' 59.93" (89° 59' 59.93")	1634.290
24	28° 19' 59.9501"	120° 29' 00.0360"	51	6863300.534	253277.639	269° 59' 59.93" (89° 59' 59.93")	1634.290
25	28° 19' 59.9501"	120° 28' 00.0360"	50	6860988.979	839912.576	269° 59' 59.93" (89° 59' 59.93")	1634.291
25	28° 19' 59.9501"	120° 28' 00.0360"	51	6863266.324	251643.123	269° 59' 59.93" (89° 59' 59.93")	1634.291
26	28° 19' 59.9501"	120° 27' 00.0360"	50	6861035.882	838277.291	269° 59' 59.96" (89° 59' 59.96")	1634.292
26	28° 19' 59.9501"	120° 27' 00.0360"	51	6863231.889	250008.595	269° 59' 59.96" (89° 59' 59.96")	1634.292
27	28° 19' 59.9501"	120° 26' 00.0360"	50	6861082.558	836642.021	270° 00' 00.04" (90° 00' 00.04")	1634.292
27	28° 19' 59.9501"	120° 26' 00.0360"	51	6863197.228	248374.055	270° 00' 00.04" (90° 00' 00.04")	1634.292
28	28° 18' 59.9501"	120° 26' 00.0360"	50	6862930.733	836694.632	0° 00' 00.02" (180° 00' 00.02")	1847.078
28	28° 18' 59.9501"	120° 26' 00.0360"	51	6865044.593	248334.763	0° 00' 00.02" (180° 00' 00.02")	1847.078
29	28° 17' 59.9502"	120° 26' 00.0360"	50	6864778.905	836747.213	359° 59' 59.87" (179° 59' 59.87")	1847.073
29	28° 17' 59.9502"	120° 26' 00.0360"	51	6866891.954	248295.492	359° 59' 59.87" (179° 59' 59.87")	1847.073
30	28° 17' 59.9502"	120° 27' 00.0360"	50	6864732.264	838382.997	90° 00' 00.00" (270° 00' 00.00")	1634.803
30	28° 17' 59.9502"	120° 27' 00.0360"	51	6866926.589	249930.544	90° 00' 00.00" (270° 00' 00.00")	1634.803



The numeric precision shown does not reflect the spatial accuracy of the ground position.

Object Description : E 36/1130 (Pending)

Estimated area : 10274.40 (Ha) - Unsurveyed

Datum : GDA2020

1 Main Polygon description.

Id	Geographic coordinates		Grid coordinates			Azimuths and distances	
	Latitude (South)	Longitude (East)	Zone	Northing(m)	Easting(m)	Mid Azimuth	Spheroidal dist. (m)
31	28° 17' 59.9502"	120° 28' 00.0360"	50	6864685.398	840018.795	89° 59' 59.96" (269° 59' 59.96")	1634.802
31	28° 17' 59.9502"	120° 28' 00.0360"	51	6866960.998	251565.583	89° 59' 59.96" (269° 59' 59.96")	1634.802
32	28° 18' 59.9501"	120° 28' 00.0360"	50	6862837.190	839965.700	179° 59' 59.96" (359° 59' 59.96")	1847.073
32	28° 18' 59.9501"	120° 28' 00.0360"	51	6865113.663	251604.343	179° 59' 59.96" (359° 59' 59.96")	1847.073
33	28° 18' 59.9501"	120° 29' 00.0360"	50	6862790.078	841601.258	89° 59' 59.94" (269° 59' 59.94")	1634.546
33	28° 18' 59.9501"	120° 29' 00.0360"	51	6865147.860	253239.114	89° 59' 59.94" (269° 59' 59.94")	1634.546
34	28° 18' 59.9501"	120° 30' 00.0359"	51	6865181.830	254873.873	89° 59' 59.93" (269° 59' 59.93")	1634.545
35	28° 18' 59.9501"	120° 31' 00.0360"	51	6865215.574	256508.625	89° 59' 59.92" (269° 59' 59.92")	1634.550
36	28° 17' 59.9501"	120° 31' 00.0360"	51	6867062.870	256470.633	0° 00' 00.03" (180° 00' 00.03")	1847.073
37	28° 16' 59.9501"	120° 31' 00.0359"	51	6868910.162	256432.658	359° 59' 59.67" (179° 59' 59.67")	1847.070
38	28° 15' 59.9501"	120° 31' 00.0359"	51	6870757.451	256394.706	359° 59' 59.93" (179° 59' 59.93")	1847.065
39	28° 15' 59.9501"	120° 30' 00.0359"	51	6870723.746	254759.191	269° 59' 59.94" (89° 59' 59.94")	1635.311
40	28° 15' 59.9501"	120° 29' 00.0359"	50	6868334.749	841761.225	269° 59' 59.96" (89° 59' 59.96")	1635.310
40	28° 15' 59.9501"	120° 29' 00.0359"	51	6870689.816	253123.665	269° 59' 59.96" (89° 59' 59.96")	1635.310
41	28° 15' 59.9501"	120° 28' 00.0360"	50	6868381.806	840124.899	269° 59' 59.97" (89° 59' 59.97")	1635.310
41	28° 15' 59.9501"	120° 28' 00.0360"	51	6870655.659	251488.128	269° 59' 59.97" (89° 59' 59.97")	1635.310
42	28° 14' 59.9501"	120° 28' 00.0360"	50	6870230.006	840177.908	359° 59' 59.97" (179° 59' 59.97")	1847.060
42	28° 14' 59.9501"	120° 28' 00.0360"	51	6872502.983	251449.431	359° 59' 59.97" (179° 59' 59.97")	1847.060
43	28° 13' 59.9501"	120° 28' 00.0360"	50	6872078.203	840230.887	359° 59' 59.93" (179° 59' 59.93")	1847.056
43	28° 13' 59.9501"	120° 28' 00.0360"	51	6874350.304	251410.755	359° 59' 59.93" (179° 59' 59.93")	1847.056
44	28° 13' 59.9502"	120° 27' 00.0360"	50	6872124.997	838594.065	269° 59' 59.94" (89° 59' 59.94")	1635.819
44	28° 13' 59.9502"	120° 27' 00.0360"	51	6874315.948	249774.695	269° 59' 59.94" (89° 59' 59.94")	1635.819
45	28° 12' 59.9502"	120° 27' 00.0360"	50	6873973.173	838646.760	359° 59' 59.98" (179° 59' 59.98")	1847.051
45	28° 12' 59.9502"	120° 27' 00.0360"	51	6876163.278	249735.786	359° 59' 59.98" (179° 59' 59.98")	1847.051
46	28° 11' 59.9502"	120° 27' 00.0359"	50	6875821.346	838699.424	359° 59' 59.66" (179° 59' 59.66")	1847.047
46	28° 11' 59.9502"	120° 27' 00.0359"	51	6878010.605	249696.895	359° 59' 59.66" (179° 59' 59.66")	1847.047
47	28° 11' 59.9502"	120° 28' 00.0359"	50	6875774.587	840336.759	90° 00' 00.01" (270° 00' 00.01")	1636.328
47	28° 11' 59.9502"	120° 28' 00.0359"	51	6878044.934	251333.465	90° 00' 00.01" (270° 00' 00.01")	1636.328
48	28° 12' 59.9502"	120° 28' 00.0359"	50	6873926.396	840283.838	179° 59' 59.81" (359° 59' 59.81")	1847.046
48	28° 12' 59.9502"	120° 28' 00.0359"	51	6876197.621	251372.100	179° 59' 59.81" (359° 59' 59.81")	1847.046
49	28° 12' 59.9502"	120° 29' 00.0363"	50	6873879.392	841920.942	90° 00' 00.04" (270° 00' 00.04")	1636.084
49	28° 12' 59.9502"	120° 29' 00.0363"	51	6876231.738	253008.414	90° 00' 00.04" (270° 00' 00.04")	1636.084